

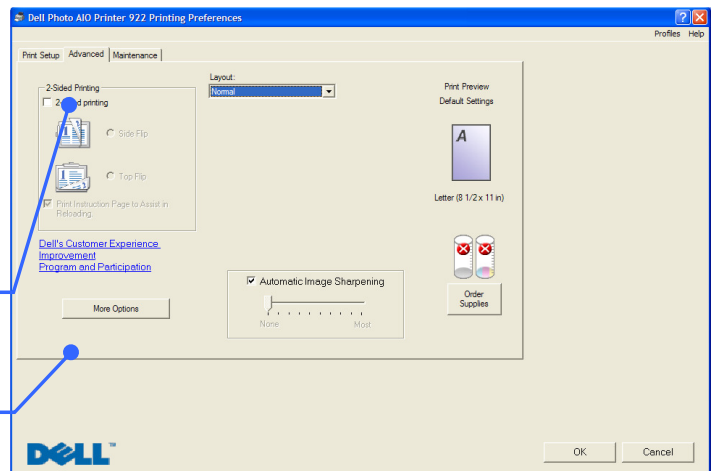
Please read before installing your cartridge



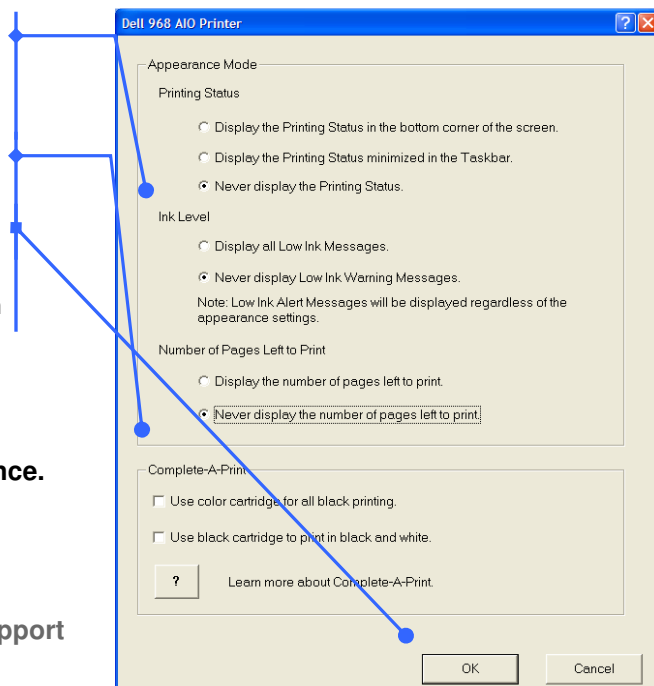
Instructions for installing EnviroInks.com Remanufactured Black & Color Inkjet Cartridges for the Dell Series 7, 9 and 11 Inkjet Printer Models (Includes Dell Printer Models 926/966/968/V305/V505)

Dell recently changed their software and recycled cartridges now read as empty or low even when they are full of ink. Your computer cannot determine any level of ink on these cartridges and therefore will give a message saying that the cartridge is empty, or not full. This is incorrect; these cartridges are **FILLED WITH THE EXACT SAME AMOUNT OF INK** as the genuine Dell cartridges. Fax functionality unavailable in Series 7 & 11 models.

1. Install your EnviroInks cartridge(s). Go to the Start menu on your PC, then Control Panel and then to Printers and Faxes
2. On the next screen, find your printer and then right-click and select Printing Preferences.
3. This will bring up the Printing Preferences for your printer. On this screen select the Advanced tab at the top.
4. Then select the More Options button on the lower left side of the screen




5. Under Appearance Mode, make sure that "Never display" is selected for ALL options.
6. Also, make sure that the options under "Complete-A-Print" are left unchecked.
7. Select OK to complete.
-Repeat these steps for every cartridge installation
-Installation instructions will not reset ink levels



Your cartridge is now ready to use!

Please call us if you need any further assistance.

 Toll Free 1-888-948-1115
Call us Monday-Friday 9am-5pm CST

Technical Support

 assistance@enviroinks.com